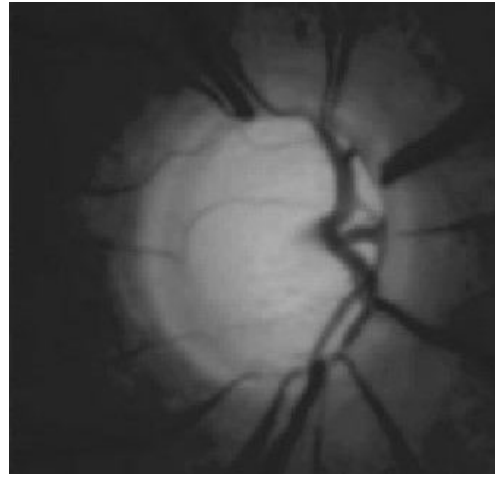


# Glaucoma

## Normal Optic Nerve vs. Enlarged Optic Nerve



During today's visit Doctor found that the patients optic nerve was enlarged, the pressure inside the eye was high or you have a family history of glaucoma.

These tests are done to see if the patient's enlarged optic nerve has begun to affect their vision. Normally Glaucoma is a disease of older people.

### **HRT Testing:**

A test in which the doctor uses a special laser to take 3 dimensional photographs of the optic nerve and surrounding retina. This laser will NOT harm the eye.

### **Visual Field:**

A visual field test produces a map of your complete field of vision which is affected if you have Glaucoma. During this test, you will be asked to look straight ahead and then press a buzzer when a moving light passes your peripheral (or side) vision.